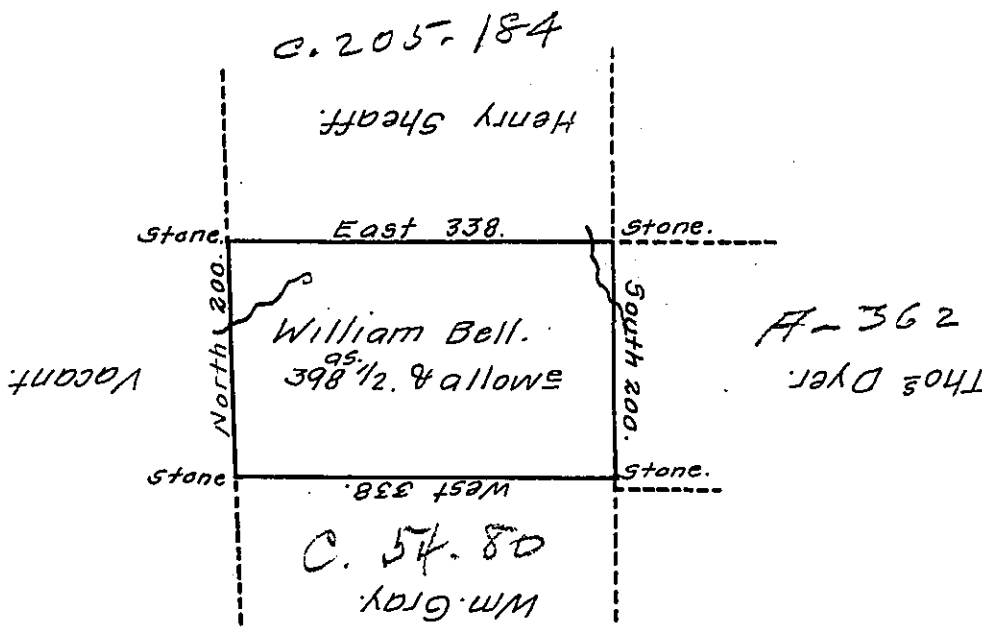


DEWISON -
LUZERNE



A Draft of a tract of land called — situate on some of the head waters of Lehi- & ~~Nesqueh~~ ^{Wappalepen} Joining Land surveyed for Henry Sheaff & others in Luzerne County containing Three hundred & Ninety eight acres 1/2 & allowance of six & Cent. for roads Surveyed for William Bell the 22^d Day of June, 1792 in Pursuance of a warrant dated the 4th day of April, 1792.

To Daniel Brodhead, Esq^r, } by Wm. Gray, D.S.
Surv^r Gen^l. }

IN TESTIMONY that the above is a copy of the original remaining on file in the Department of Internal Affairs of Pennsylvania, made conformably to an Act of Assembly approved the 16th day of February, 1833, I have hereunto set my Hand and caused the Seal of said Department to be affixed at Harrisburg, this twenty ninth day of August, 1911.

Henry Howell
Secretary of Internal Affairs.